

# CASCADE

# A&E

FEBRUARY 2025 | VOLUME 31 | ISSUE 2

M A G A Z I N E

*Winter Fire by Janet Frost*



Help Youth Now.  
Change Their Trajectory for a Lifetime.

*We Are*

---

## **J BAR J YOUTH SERVICES**

---



**Donate Now**  
[www.jbarj.org](http://www.jbarj.org)



**SPRING CLASSES OPEN FEB. 10**

# create your play in an art class

Let your creativity and inspirations come to life.

**CERAMICS • POTTERY • PAINTING • DRAWING  
GLASS ART • DIY • JEWELRY • ART PARTIES & MORE**

Look for adult, youth and family classes.

For schedules, fees and more, visit [bendparksandrec.org/artstation](http://bendparksandrec.org/artstation)

Art classes held at Harmon Park Clay Studio, Larkspur Community Center and other locations.



p. (541) 706-6114

*play for life*

CASCADES THEATRICAL COMPANY PRESENTS

# GRAND HORIZONS

By **BESS WOHL**



**A Tony Nominated Play**

Grand Horizons takes a truly hilarious and touching look at love, marriage and family...and trust, while also asking a few tart questions about comedy itself. At some point you have to ask yourself, What do I want?

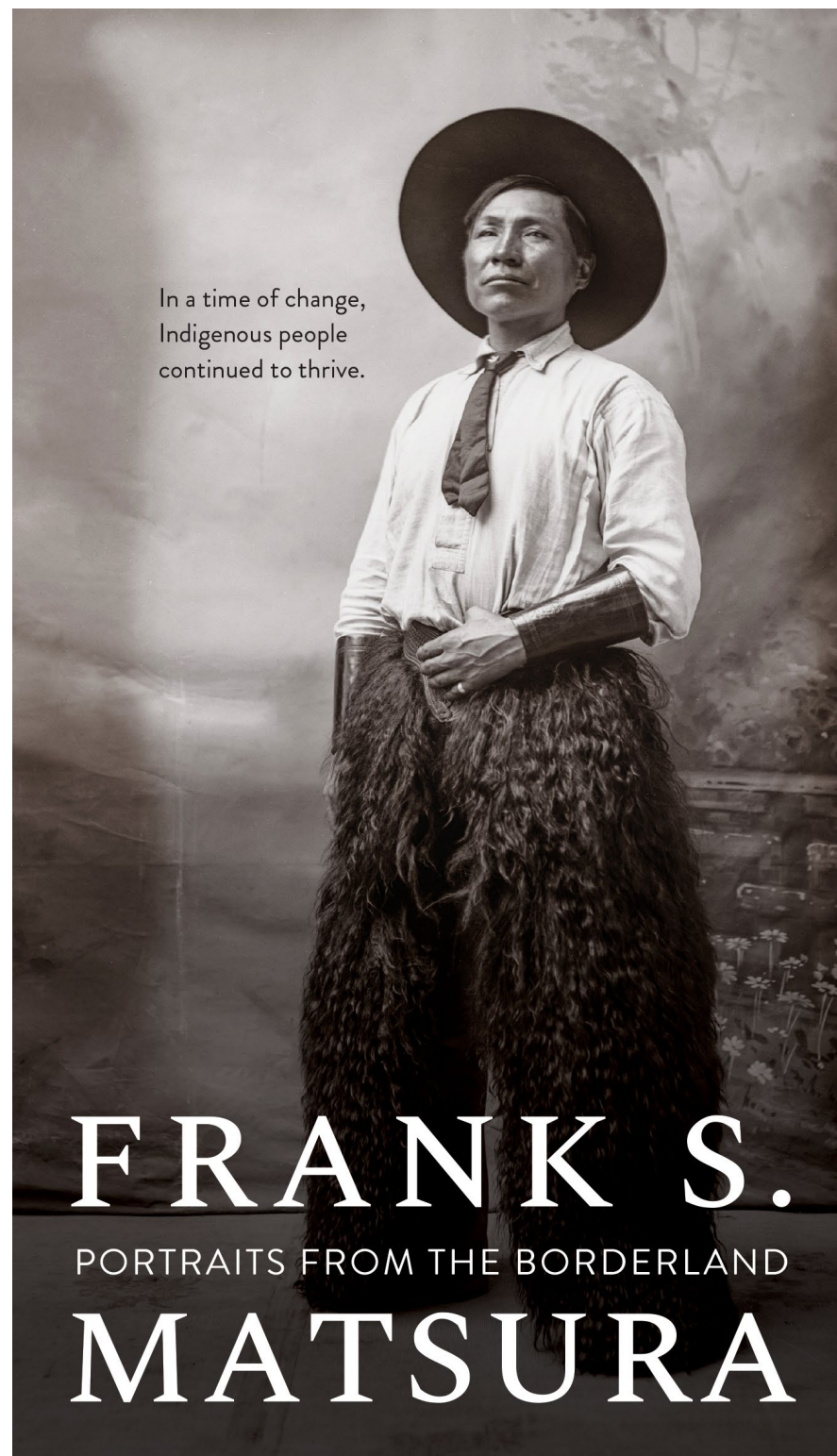
Directed by Desi Thrower

**Feb 14 – Mar 2**  
**THUR-SAT 7:30PM & SUN 2PM**

**541.389.0803**  
[cascadestheatrical.org](http://cascadestheatrical.org)

CASCADES THEATRE, 148 NW GREENWOOD AVE. BEND OR

Cascades Theatrical Company is a 501(c)(3) non-profit organization.



In a time of change,  
Indigenous people  
continued to thrive.

# FRANK S.

PORTRAITS FROM THE BORDERLAND

# MATSURA

EXHIBITION NOW OPEN



# HIGH DESERT MUSEUM

[HIGHDESERTMUSEUM.ORG](http://HIGHDESERTMUSEUM.ORG)

# HIGH DESERT CHAMBER MUSIC

2024-2025 Season  
HDCM Concert Series

Presenting Sponsors:

LYNCH MURPHY MCLANE LLP  
ATTORNEYS AT LAW

Concert Sponsor:



## FRANK ALMOND

February 14, 2025, 7:30pm

Unitarian Universalist Fellowship

with special guest

## ISABELLE SENGER



Concert Sponsor:



## JEFFREY KAHANE

March 7, 2025, 7:30pm

Unitarian Universalist Fellowship



facebook  
Instagram  
YouTube

**TICKETS AVAILABLE BY PHONE OR ONLINE!**  
541.306.3988 / HighDesertChamberMusic.com

# inside

- 4 ..... COVER STORY
- 6 ..... FIRST FRIDAY/  
BEND EXHIBITS
- 10 ..... FIRST FRIDAY/  
REDMOND EXHIBITS
- 11 ..... FIRST FRIDAY  
JANUARY PHOTOS
- 12 ..... ARTS
- 18 ..... MUSIC
- 20 ..... FILM/THEATRE
- 24 ..... LITERATURE
- 26 ..... CENTRAL OREGON  
CALENDAR
- 27 ..... SUNRIVER
- 29 ..... SECOND SATURDAY  
JANUARY PHOTOS
- 30 ..... SISTERS
- 31 ..... CALL TO ART
- 32 ..... WORKSHOPS

Grazes and Willows, 18x24, oil by Janet Frost

# CASCADE A&E MAGAZINE

---

## PRODUCERS

Pamela Hulse Andrews | Founder

Jeff Martin | President/CEO

Marcee Hillman Moeggenberg | Editor/Production Director/Feature Writer

David Hill | Distribution

---

Cascade A&E is a publication of Cascade Publications Inc., locally owned and operated since 1994 and published in Bend, Oregon the Wednesday before First Friday every month. For editorial and advertising information call 541-388-5665.

Send calendar and press releases to [AE@CascadeAE.com](mailto:AE@CascadeAE.com) or A&E 404 NE Norton Ave., Bend OR 97701.

Cascade A&E is available for free all over Central Oregon or \$30 for a year subscription.

Subscriptions outside Central Oregon are \$40 a year. [CascadeAE.com](http://CascadeAE.com)



*JFrost*

Early one Morning by Janet Frost

# An Homage to Willows

by Cover Artist JANET FROST



Summer Cabin, oil by Janet Frost

**W**inter Fire, on this month's cover, is an homage to the willows that grow along the banks of our Central Oregon rivers and lakes. I live along the Deschutes River where willows thrive. Every day these common, but ever-changing, features of the landscape catch my eye.

In hues of green to gold to red, willows march through the seasons giving cover to elk, deer, birds, and all manner of tiny creatures. They are a delight to paint, whether they are the focus of my work or an interesting background feature. For me, willows are at their best when the sun is low in the sky, and they are set aglow like campfires along the riverbank.

Of course, not all my paintings are about willows. Central Oregon's fabulous

mountains, grand rock formations, beautiful trees, and interesting structures are all tempting subject matter, and I happily paint them. But the humble willow, a convenient muse, never fails to offer me inspiration.

*Janet Frost is a landscape artist who lives near Sunriver and has won both regional and national recognition for her oil paintings. She is a member of the High Desert Art League, Plein Air Painters of Oregon, American Impressionist Society, and Oil Painters of America. This month, her paintings are in exhibits at the Nancy McGrath Green Gallery in Sunriver and Premiere Properties in Bend. Visit her website to view her work online.*

*JanetFrost.com • djfrostarts@gmail.com*

## FIRST FRIDAY & BEND EXHIBITS

### Bend Senior Center

1600 SE Reed Market Rd.

541-388-1133 • [bendparksandrec.org/facility/bend-senior-center](http://bendparksandrec.org/facility/bend-senior-center)

The Bend Senior Center at the Larkspur Community Center is showing art by members of the SageBrushers Art Society. Come visit the facility and enjoy beautiful paintings in acrylic, oil, pastel, and watercolor, as well as outstanding photography. Showing through February. 1600 SE Reed Market Rd, Bend.

### Blue Spruce Pottery

20591 Dorchester E.

541-382-0197 • [bluesprucepottery.com](http://bluesprucepottery.com)

This family-owned business has been making handmade pottery in Bend since 1976. Call to arrange a time to come shop their large selection of mugs, bowls, casseroles, lamps and more. Shop online and have gifts shipped directly to your family and friends. You can also find Blue Spruce Pottery at Red Chair Gallery in downtown Bend.

### COCC Barber Library

2600 NW College Way

541-383-7560

[cocc.edu/library](http://cocc.edu/library)

Artist-activist Betty LaDuke joins COCC's Season of Nonviolence.

Turtles with a "tale" are a captivating part of Central Oregon Community College's (COCC) 17th annual Season of Nonviolence — held mid-January through early April — which includes a February 19 art reception (4:30pm) and talk (5:30pm) with artist-activist Betty LaDuke, at the Bend campus's Barber Library. The talk, held in the west wing reading room of the library (registration required), corresponds with LaDuke's exhibition *Turtle Wisdom: Personal, Political, Playful*, now on display at the library's Rotunda Gallery through March 20. Events are free and open to the public.

"As we emerged from our pandemic isolation in 2021, my doorway opened and 20 turtles gradually appeared in my Ashland, Oregon studio," said LaDuke in an artist's statement. "While some turtles have been waiting for me in sketchbooks created decades ago in Africa, Latin America and Asia, new ones now evolved. They became my symbolic storytellers, commenting on the events currently reshaping our lives."

Oregon-based LaDuke, who has spent more than 60 years traveling the world as an artist and activist — advocating for sustainability and social justice — will speak about how the turtles that comprise her exhibition are symbolic storytellers for current events, each one telling a story and inviting conversation rather than offering answers. LaDuke taught art for more than 30 years at Southern Oregon University, retiring as a professor emeritus.

The full 2025 Season of Nonviolence schedule, presented by COCC's office of equity and well-being and the COCC Foundation's Nancy R. Chandler Lecture Series, can be found at [cocc.edu/snv](http://cocc.edu/snv). COCC's Season of Nonviolence is inspired by the work of Mahatma Gandhi, Dr. Martin Luther



Turtle Water Protector by Betty LaDuke

King Jr. and others, honoring their vision for an empowered, nonviolent world. For more information, contact Charlotte Gilbride, coordinator of the Nancy R. Chandler Lecture Series, at 541-383-7257 or [cgilbride@cocc.edu](mailto:cgilbride@cocc.edu).



Undercurrent, watercolor and collage  
by Terri Gonzalez

### The Grove

921 NW Mt. Washington Dr.

The Grove presents vibrant paintings by SageBrushers Art Society member, Terri Gonzalez. Watercolor has been Terri's medium of choice for some 20 years. Terri often works on canvas, using collage and gouache. She is currently a member of the Watercolor Society of Oregon and has exhibited around Central Oregon and the Portland area. Come grab a bite at The Grove and enjoy the artwork! Showing through February 28.

### High Desert Museum

59800 S Hwy. 97

541-382-4754

[highdesertmuseum.org](http://highdesertmuseum.org)

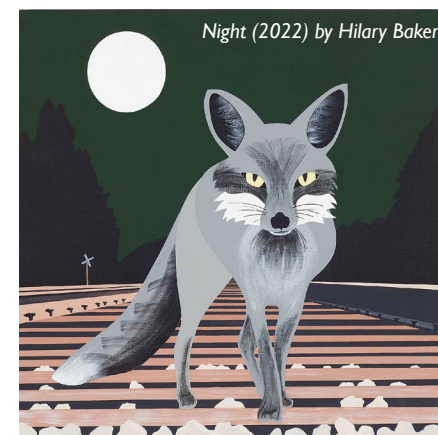
Newest exhibit, *Frank S. Matsura: Portraits from the Borderland*, examines Indigenous representation and identity during a period of regional transformation.

*Frank S. Matsura: Portraits from the Borderland* will feature 39 photographs recovered from Matsura's archive paired with

period-specific cultural items from the Indigenous Plateau, a High Desert region that encompasses the Columbia River and its tributaries. Exploring Indigenous representation through detailed photography as well as objects, the exhibition spotlights some of Matsura's most culturally significant work against a backdrop of regional transformation in the early 20th century.

The exhibition originated at the Northwest Museum of Arts and Culture in Spokane, Washington Matsura's photographs are blown up to better share their impressive detail. They capture moments that reveal Syilx (Okanogan) communities adapting to a changing time. The exhibition includes cultural objects, such as gloves, beaded cornhusk bags and leggings, drawn from the Northwest Museum of Arts and Culture's collection and from the collections of the High Desert Museum. They will be next to Matsura's photographs to bring to life attire featured in Matsura's photographs.

The exhibition has four themes: *The Myth of the Vanishing Indian*, *Beauty and Utility*, *Collapsing Hierarchy* and *Geijutsu Shashin (Photographic Art)*. Each theme considers various ways in which Matsura's artistic legacy challenges stereotypes, unsettles power dynamics in image-making, and fills important gaps in historical and regional narratives.



Night (2022) by Hilary Baker



## FIRST FRIDAY & BEND EXHIBITS

Continuing through February 9, 2025 is *Rick Bartow: Animal Kinship*, an exhibition from the collections of Jordan D. Schnitzer and His Family Foundation by one of Oregon's most celebrated artists, will open September 20, 2024 at the High Desert Museum. This is the third art exhibition in a year-long series of collaboration with the Jordan Schnitzer Family Foundation exploring the complex relationships between humans, animals and the world we share.

A new exhibit opening February 22 invites you to explore the wonders of patterns in nature. *Patterns at Play: Fractals in Nature*, an original exhibition, showcases how repetition and patterns intertwine in the natural world. The exhibit allows visitors to build their own patterns while an animation creates new fractals right before their eyes.

And continuing through April 6, *Neighbors: Wildlife Paintings by Hilary Baker* shares imagery of wildlife native to the High Desert — gray fox, black bear, pronghorn antelope and others. They stand in the foreground with urban encroachment in the background—the fox on railroad tracks, the black bear in front of a 7-Eleven and the pronghorn antelope against the housing developments that now impede their movement across the landscape.

Continuing through June 15, *Blood, Sweet & Flannel* explores what flannel represents. This unique experience invites visitors to explore the stories behind flannel — a fabric that goes beyond clothing to reflect the history of work and culture in the High Desert region. This original exhibition runs through June 15, 2025.

### Jeffrey Murray Photography Gallery

118 NW Minnesota Ave.

541-325-6225

jeffreymurrayphotography.com

The Jeffrey Murray Photography Gallery features the work of local photographer Jeffrey Murray. Visitors can browse comfortably in the two-story gallery enjoying visually adventurous displays of landscape, wildlife and contemporary work. Open daily Tuesday-Sunday.

### Kreitzer Gallery

20214 Archie Briggs Rd.

805-234-2048 • KreitzerArt.com

*Healing Water* continues showing at the St. Charles Gallery through September 2025.

Thomas Albright, art critic of the *San Francisco Chronicle* wrote: "David Kreitzer is a highly traditional figure painter who demonstrates how much poetic intensity the old tradition can still contain."

A full time artist since he received his masters degree in painting at San Jose State University in 1967, David grew up the son of a Lutheran minister who, due to his calling, moved his family frequently throughout the Nebraska countryside. His works are in the collections of Howard and Roberta Ahmanson, Hirschhorn Foundation, the corporate headquarters of Revlon Olga, Barnes-Hind, Sinclair Paints, Lloyd's Bank, Cargill and the San Diego, Sheldon, Minnesota, Santa Barbara, and San Luis Obispo Museums. Private collectors include Howard and Roberta Ahmanson, Ray Bradbury, Mary Tyler Moore, Michael Douglas, Pepe Romero, Quinn Martin, Raymond Burr, and Donald Simon.

Kreitzer Gallery and Studio open every week Friday-Sunday, 1-5pm and by appointment.

### Layor Art + Supply

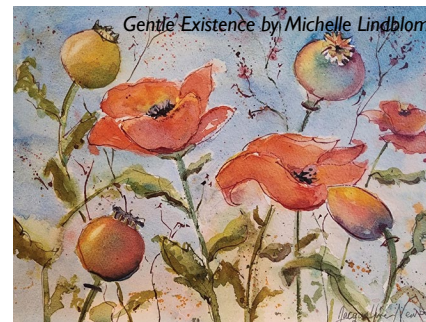
1000 NW Wall St., Ste. 110

541-322-0421 • layorart.com

Layor Art is excited to be hosting John Sherry for the month of February. Pastel on paper is John's medium of choice. The colors and pigments are amazing and mark making with pastel is pure joy for him. John paints mainly from his own reference photos. He is constantly capturing images that he thinks might have painting potential, i.e., interesting subject matter with good composition. Landscapes, urban scenes, odds and ends of still life. Early on as an artist, John set out to paint impressionistic landscapes. But in day to day painting, he is constantly lured to paint ordinary objects. Trains, trucks, coffee cups! He enjoys the challenge of making the mundane appear interesting through art. John's show goes through the month of January and can be viewed during Layor's regular business hours: Monday through Friday 10am-5pm, Saturday 10am-4pm, and Sunday 12-4pm.



Easy Rider, 16 x 20 pastel on paper by John Sherry



Gentle Existence by Michelle Lindblom

I enjoy bringing the outside world into my paintings by adding poppies, lupines, lavender, and other wildflowers creating splashes of color."

Her energetic paintings have been featured in magazines and books such as *Somerset Studio's Art Journaling*, *Interweave Press's Cloth Paper Scissors*, *Studios*, the *Cloth, Paper Scissors Book*, and *Splash 17, the Best of Watercolor*. She is a member of the Oregon Watercolor Society, the Red Chair Gallery, and the High Desert Art League.

Jacqueline shares her passion for watercolor painting and mixed-media art journaling by teaching at her Bend, private studio, and the Art & Soul Retreats in Portland, Oregon. She has conducted watercolor workshops in France and Italy.

### SEND US YOUR FIRST FRIDAY PHOTOS!

Send us your photos from your gallery or shop of artists, patrons and hosts to be featured in *Cascade A&E Magazine* each month! Send all photos (and remember to include names)

to ae@cascadeae.com.

Got questions?

Call 541-388-5665 or email marcee@cascadebusnews.com.



Hudson and Sophia Turbity admired each piece in the "Make a Wish" group show at Tumalo Art Co. but Nancy Becker's colorful glass birds were Sophia's clear favorites. Photo courtesy of Tumalo Art Co.

## FIRST FRIDAY & BEND EXHIBITS

### Peterson Contemporary Art

550 NW Franklin Ave.

541-633-7148 • pcgallery.com

Please join Peterson Contemporary Art in welcoming three talented artists for the February 7 First Friday Art Walk. The show is titled *Love Songs* and artists Isabelle Alessandra, Cathrine Edlinger-Kunze and Amy Sullivan will all be in attendance for the festivities from 5-8pm. California painter, Isabelle creates works that intellectually and emotionally engages the viewer with bright, colorful themes that build up and become the “history” of each painting. German-born and Albuquerque-based Cathrine focuses mainly on figurative painting that feature performers and dancers who seem to float right out of her works with subtle elegance and quiet depth. Trained as an interior designer, Amy creates works that can pull a room together almost absorbing the art into the space with a simplicity that is both moody and luminous. This show will run through the month of February.

*American Bison-Spring by Joren Traveller*



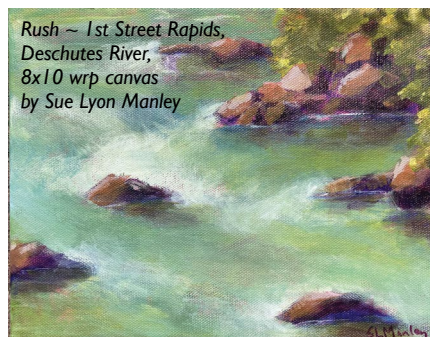
### Premiere Property Group

25 NW Minnesota Ave.

541-241-6860

bend.premierepropertygroup.com

Premiere Properties hosts a two-month group show displaying the works of High Desert Art League members. The show will include a diverse selection of oil, acrylic, pastel, encaustic and watercolor paintings as well as prints and photographs. The show can be viewed February and March, Monday through Friday 8:30am-5pm. For more information on the High Desert Art League and its members, visit [highdesertartleague.com](http://highdesertartleague.com).



### Red Chair Gallery

103 NW Oregon Ave.

541-306-3176

redchairgallerybend.com

In February, Red Chair Gallery showcases wildlife photography by Sue Dougherty and oil and acrylic paintings by Sue Lyon Manley. The pedestals are filled with Blue Spruce Pottery's iconic stoneware pottery and

raku pieces. Located at the corner of Bond Street and Oregon Avenue, Red Chair Gallery is open seven days a week: Monday-Saturday, 10am-6pm and Sunday, 12-4pm.



### Sage Custom Framing & Gallery

834 NW Brooks St.

541-382-5884

sageframing-gallery.com

February's featured artist at Sage Custom Framing and Gallery will be the shop's owner, Denise Rich. This show will be the last exhibit, as Rich will be retiring after 24 years in business at the Brooks Street

location. The show will include both recent works and paintings from past years. After closing the store, Rich plans to focus on her art.

A clearance sale is planned for mid-March, clearing out framing and art supplies, framing tools and equipment, art and fixtures.

Show runs February 4-March 8, Gallery hours are Tuesday-Friday, 10am-4pm and Saturday, 12-4pm. Further information and dates are posted on the website.

### SageBrushers Art Society

117 SW Roosevelt Ave.

541-617-0900

sagebrushersartofbend.com

SageBrushers, a vibrant membership organization with a working studio and gallery, presents *The Abstract Show*. Visitors are invited to enjoy viewing original artworks in various mediums by over twenty artists. Don't miss this exciting and eclectic show. Opening Hours: Mondays, Wednesdays, Fridays and Saturdays 1pm-4pm. Showing through February.



### The Stacks Art Studios & Gallery

Old Mill District, Second Floor

404-944-9170

The Stacks Art Studios & Gallery features the artwork and work of local creators Kira Frances, Lindsay Gilmore, Alyson Brown and Jennifer McCaffrey.

Kira has developed a body of work that speaks to the relationship between the hidden worlds of the subconscious and the tangible reality that we all share. In this series, she concentrates on striking a balance between precisely rendered and intricately detailed feathers, and uncluttered backgrounds. Her work will be on display at The Stacks Gallery and Studios in the Old Mill above Sisters Coffee. You can also find her work online at [kirafrances.com](http://kirafrances.com).

Lindsay Gilmore creates abstract landscape paintings inspired by the colors and compositions that have captivated her while on adventures outdoors with her family.

Alyson Brown (Wild Folklore) is a photographer and stylist specializing in beverage and botanicals. While she focuses most of her time on brand development and content creation, Alyson is also The Stacks in-house mixologist for First Fridays.

CASCADE **A&E**  
MAGAZINE  
DEADLINE

Please send First Friday Submissions

No Later than February 19

for the March Edition to: [AE@CascadeAE.com](mailto:AE@CascadeAE.com)

## FIRST FRIDAY & BEND EXHIBITS

Jennifer McCaffrey says, "As a former dancer, capturing movement is the overarching theme in my work. I love painting in a variety of styles ranging from abstract to impressionistic, and my aim in any piece is to create something that feels alive. I first studied art at Wake Forest University in 2009, and went on to work in healthcare while painting in every spare moment I could find. It is a dream realized to be a part of this community of creators. Apart from painting, I work PRN as a surgical physician assistant, am a mother of three, runner, woodworker, music lover, and trail mix high-grader. Like most Bendites, I am usually out somewhere with poor cell reception taking in the beauty of Central Oregon when not in the studio."

Call the studio for hours and appointments.

### Touchmark at Pilot Butte

1125 NE Watt Way  
541-238-6101

[touchmark.com/senior-living/or/bend](http://touchmark.com/senior-living/or/bend)

As a member of the High Desert Art League, artist Janice Rhodes will feature her encaustic paintings at Touchmark at Pilot Butte February through March. Her medium, encaustics, is a mixture of wax, resin and pigment, and it dates back to the 1st Century AD. You are invited to see Janice's modern application of this ancient art in Touchmark's mezzanine gallery.



Encaustic by Janice Rhodes



Racing the Stars, mixed media by Shelli Walters

a celebration of art without limits. Each of the artists in this gallery has come to be known for a particular style, a technique, a palette, a medium, or a favorite subject. What might we see if they give themselves the permission

### Tumalo Art Company

Old Mill District  
541-385-9144  
[tumaloartco.com](http://tumaloartco.com)

Tumalo Art Co.'s group exhibit, *Unbound* opens February 7, from 3-7pm during the Old Mill District First Friday Gallery Walk.

*Unbound* — this exhibition is a

to break out of that mold?

Perhaps a landscape painter explores abstraction or a watercolorist starts including other materials to make marks and texture. Come see how these artists push boundaries and redefine what art can be. It's all about freedom, expression, and the joy of creating without constraints. Continues through March.

Tumalo Art Co. is an artist-run gallery in the heart of the Old Mill District open seven days a week.

### The Wine Shop

55 NW Minnesota Ave.  
541-389-2884

[thewineshopbend.com](http://thewineshopbend.com)

The Wine Shop presents abstract geometric paintings by SageBrushers Art Society member, Glo Bremer. Glo finds herself drawn to geological formations: boulders, pinnacles, and rock faces. Nature's sculptural forms inspire a humble impulse to respond with paint. As a photographer who favors the abstract, she also uses these images, and other found textures in collages with acrylic paint. Stop in to enjoy a beverage and drink in the art! Showing through February 28.



Big Marble, acrylic on canvas by Glo Bremer

### HIGH DESERT ART LEAGUE



Vivian C. Olsen

[WWW.HIGHDESERTARTLEAGUE.COM](http://WWW.HIGHDESERTARTLEAGUE.COM)

### SageBrushers ART SOCIETY INC.

SageBrushers Gallery presents

## THE ABSTRACT SHOW

Through February



"Home Sweet Home" mixed media by Terri Gonzalez

Visit us Mon, Wed, Fri & Sat from 1-4PM  
117 SW Roosevelt Ave. Bend, OR

541-617-0900 | [sagebrushersartofbend.com](http://sagebrushersartofbend.com)



**First Friday Gallery Walk**  
**February 7 | 3-7pm**

**UNBOUND**  
A GROUP SHOW

**TUMALO Art CO.**  
A FINE ART GALLERY

**OLD MILL DISTRICT**



**SAGE**  
CUSTOM PICTURE FRAMING

Featuring Works by  
*Local Artists and Quality Framing*

834 NW BROOKS STREET • BEND  
541-382-5884 • [www.sageframing-gallery.com](http://www.sageframing-gallery.com)

## **Arome**

432 SW Sixth St.  
541-527-4727 • aromekitchen.com

Jay Lowndes creates unique, one-of-a-kind crafted, hardwood pieces that not only accent any room in your home but are also practical for everyday use. He has the knack and experience for creating durable, wooden-wares such as charcuterie and cutting boards, coasters, Lazy Susans, small furniture pieces, quilt hangers, photo-boxes, and picture frames. He welcomes custom orders and can personalize a piece just for you! “Less slivers; more glitter!”

Beth Hanson creates mixed media paintings currently focusing on collage and acrylic. She is inspired by personal relationships and life's little pleasures. Her joy is in the process of making art which, she believes, is much like life itself with its many lessons in patience, persistence and lifelong learning. [bethhansonart.com](http://bethhansonart.com)

## **Cares & Whoas**

436 SW Sixth St.  
916-354-2119 • caresandwhoas.com

As a long time amateur photographer, Jennifer Ramerman now uses her photos as inspiration for watercolor and fused glass paintings. She enjoys experimenting with many different art mediums such as pastel, colored pencil, charcoal and she recently purchased a pottery kiln.

## **Cascade Hasson Sotheby's International Realty**

535 SW Sixth St.  
541-383-7600 • cascadehassonsir.com

Dry Canyon Arts Association will hold a reception for the February Artist of the Month Wendy Wheeler-Jacobs at Cascade Hasson Sotheby's. Catered by Justy's!

Wendy Wheeler-Jacobs creates what can best be described as “portraits” of birds, animals, trees, plants, mountains, rocks and other natural elements in saturated color. While watercolor is her preferred tool, she also enjoys acrylic and colored pencil. See more of her work at [thepaintgeek.com](http://thepaintgeek.com).

Also at Cascade Hasson Sotheby's will be Dina Rhoden, January's Artist of the Month.

Dina's collages are a testament to her desire to create beauty and joy. Using acrylic paint, gold leaf, and found objects such as placemats and jeans, she layers textures and colors to produce pieces that are both visually stunning and emotionally uplifting. “My whole goal is for it to be joyful and surprising. Wherever you look, it'll be something you didn't expect,” she says.

The public is invited to join in on the celebration and view selections of Wendy and Dina's artworks.

Cascade Hasson Sotheby's will also be hosting artists Drew Collins, Josie Powell, Erin Skeer, and Jim Hensley.

James H. Hensley II, a resident of Redmond Oregon and native Oregonian, is a self-proclaimed Realist Sketch Artist, highlighting the landscapes of Central Oregon. His work includes historic and abandoned buildings and

scenic views of the area's natural features.

Josie Powell states “My handmade silver and copper jewelry is the perfect complement to the Central Oregon lifestyle and a great Valentine's Day gift. See you at the February First Friday!”

Erin Skeer takes her love for the outdoors and turns nature into art.

Drew Collins N.D. says “Sixty-five years of living artistically, challenging myself to make art, to move my emotions and disregard the outcome.”

## **Prairie Boutique**

404 SW Sixth St., Ste. 100  
541-527-1887 • desertprairie.com

Julie Wilson works with fun and colorful art of many media and crayons. See more of Julie's work at [jactrastudios.com](http://jactrastudios.com).

## **Harcourts The Garner Group Real Estate**

444 SW Sixth St.  
541-383-4360 • thegarnergroup.com

Mel Archer works in colored glass, fusing custom colors into artistic pieces. He is fascinated by the seemingly magical properties of glass. His work can be seen around Redmond and on [melarcher.com](http://melarcher.com)

Bill Lind creates utility bowls and decorative hollow vessels made from locally salvaged hardwood.

Bill Hunt repurposes vintage golf clubs using carved duck heads and live edge slabs. They are the perfect gift for the golfers in your family!!

## **SCP Redmond Hotel**

521 SW Sixth St.  
541-508-7600 • scp hotel.com/redmond

John Goodman states “I am inspired by my personal experiences and memories. My intent and challenge is to distill and simplify what I see in order to convey the mood I intend using color, lines and shapes.”

Joan Hester's jewelry designs are fueled by the desire to strike a balance between the rough and refined to create effortlessly elegant pieces that are comfortable and easy to wear. She merges craftsmanship and attention-to-detail to produce durable designs that let anyone rock their sparkle. Contrasting textured, oxidized finishes in a completed polished piece is a nod to her interest in dualities, finding inspiration in the harmonic opposites in the materials themselves.

Olive Johnson, one of our youngest Dry Canyon Arts Association members, is starting her art career with style. She will be taking time out from her scholastic duties to display her watercolor paintings of wild and domestic flowers.

Kristina Ziegler is a landscape photographer who loves to capture both majestic and small scenes to guide people close to the natural world that brings her peace and joy. Her recent work focuses on combining the landscape with the night sky, including the Milky Way, star trails, and the Aurora Borealis.



# First FRIDAY

January 2025 ~ Downtown Bend  
PHOTOS COURTESY OF MOCKINGBIRD GALLERY  
& RED CHAIR GALLERY



Emily Fox King and Sarah Schuller ~ Musician Dillon Schneider ~ Perry Brooks with First Friday visitors  
Sue Manley, Sue Dougherty and Heather and Jeff Thompson ~ Sue Manley and Sue Dougherty ~ Bend Ukelele Group



# First FRIDAY

January 2025 ~ Redwood  
PHOTOS COURTESY OF  
DRY CANYON ARTS ASSOCIATION

Bill Lind ~ Carol Picknell ~ Dina Rhoden  
Drew Collins ~ Erin Skeer ~ Jay Lowndes  
Joan Hester ~ Kris Horn ~ Krystal Allen  
Redstar Mello ~ Rex Kreuger



# Mid Oregon Free Days Return to the High Desert Museum

It's that time of year again! Visit the High Desert Museum during Mid Oregon Credit Union Free Family Saturday on February 22. Everyone can experience the latest exhibits, dynamic wildlife encounters and more for free.

"We are once again excited to welcome our community to Free Family Saturdays," said Museum Executive Director Dana Whitelaw, Ph.D. "They've always been a very popular event and an amazing way to witness and explore the educational mission of the Museum."

Along with free admission, Museum visitors can look forward to a special Daily Schedule. Guests will have the opportunity to meet a nonreleasable raptor in the Museum's care during the Bird of Prey Encounters happening every hour between 11am-3pm.

"Mid Oregon is proud to have partnered with the High Desert Museum for over 21 years, providing free access to tens of thousands of Central Oregonians," said Kyle Frick, VP of Marketing for Mid Oregon Credit Union. "The Museum is a cultural treasure for Central Oregon, and we appreciate the opportunity to continue support for this great organization."

The Museum's ongoing exhibitions include *Neighbors: Wildlife Paintings by Hilary Baker*. The exhibit shares imagery of wildlife native to the High Desert — gray fox, black bear, pronghorn antelope and others. They stand in the foreground with urban encroachment in the background such as a fox on railroad tracks or a black bear in front of a 7-Eleven. Hilary Baker, born in 1948, spent her childhood exploring the hills and canyons near her home in Los Angeles, searching for animal bones and other evidence of creatures amid the backdrop of the bustling city. This desire to collect natural elements from a vanishing world became the inspiration for her art series *Predators*. The works in the exhibition at the Museum are from this series.

*Blood, Sweat & Flannel*, an original Museum exhibition, explores what flannel represents — its history, cultural connections and production — with imagery,

tactile elements and interactive displays that bring to life the experiences of those who wore flannel. From timber to ranching, herding and sportswear, and alternative rock, each era espouses that flannel is more than just a fabric. "It's a symbol of resilience and identity," said Museum Bonnie Lee and Oliver P. Steele III Curator of Education and Engagement Molly Wilmoth. Visitors can witness how flannel has shifted over time, culminating in its association with the grunge movement of the 1990s.

Those who attend the Mid Oregon Free Family Saturday on February 22 can look forward to visiting two of the Museum's newest exhibitions. *Frank S. Matsura: Portraits from the Borderland* opens February 1. Featuring large-scale photographs taken by Japanese photographer Frank Matsura of Native people in the early 1900s, the exhibition features photos that represent some of the most accurate images of Indigenous culture during this period. The raw and sometimes playful characters in the photos challenge the stereotypes about life during that time. Clothing, beaded bags and cornhusk bags from the collections at the Northwest Museum of Art and Culture in Spokane, Washington, which originated the exhibition, and the High Desert Museum add color to the exhibition. The exhibition is possible with generous support from Art Bridges.

A new exhibit opening February 22 invites you to explore the wonders of patterns in nature. *Patterns at Play: Fractals in Nature*, an original exhibition, showcases how repetition and patterns intertwine in the natural world. The exhibit allows visitors to build their own patterns while an animation creates new fractals right before their eyes.

Winter hours are daily from 10am-4pm. Learn more about all the Museum's permanent and changing exhibitions at [highdesertmuseum.org/exhibitions](http://highdesertmuseum.org/exhibitions).

Free Family Saturdays are made possible by Mid Oregon Credit Union. [highdesertmuseum.org](http://highdesertmuseum.org) • [midoregon.com](http://midoregon.com)

## NEW PERSPECTIVE FOR FEBRUARY

by EILEEN LOCK

Dream a little on the 1st so that you can understand what it is that you desire. Ask for your dreams to come true on the 3rd and realize opportunities are available. Be ready to turn a corner on the 4th and look for the new beginnings. An awkward feeling on the 7th can be remedied by trusting your decisions. Speak up on the 9th and realize everyone has something to say.

Unexpected changes on the 11th could require that you change your direction. The Full Moon on the 12th is a time to be honest about what you want. Become more of an observer after the 13th and listen to your intuition.

Be patient from the 15th to the 19th as some situations may be very undefined.

Keep your conversations simple on the 20th and do your best to stick to the point. Make a plan for moving forward on the 23rd and realize you will still need to take your time. Decisions are being made on the 25th and explanations may be challenging. The New Moon on the 27th brings surprises and completion. Trust yourself enough to start something new.

*Love and Light Always,*

*Eileen Lock*

*Clairvoyant Astrologer / Spiritual Medium*

1471 NW Newport Ave., Bend, Oregon 97703 • 541-389-1159  
[eileenlock.freesevers.com](http://eileenlock.freesevers.com) • [oneheartministry.freesevers.com](http://oneheartministry.freesevers.com)

***Listen for the song in your heart, find the melody and dance to the music.***

# Where Art Meets the Trail

## DCAA February Artist of the Month ~ Wendy Wheeler Jacobs

In the early hours of dawn, before the world has fully stirred, Wendy Wheeler-Jacobs slips on her Hoka sneakers and ventures into the wild for her artistic inspiration. Her routine — part meditation, part athletic feat — is as constant as the sunrise through the trees with their delicate smells of juniper, sage, and pine resin. Wendy runs for miles, sometimes crossing new snow trails in winter or basking in the warm light of a summer morning. By the time the sun lifts over the horizon and casts its vibrant, dynamic hues over the landscape, the artist and athlete within her has found joyful images that will eventually transform into breathtaking paintings.

Averaging 3,500 ultramarathon miles a year, Wendy ranks in the staggering 92.94th percentile for her age group (a distinction reinforced by more than 150 ultramarathons completed). The long hours spent traversing valleys, steep trails, and canyon ridges become the ineffable images Wendy says she can only “share through art.”

Wendy’s work begins en plein air, where she captures the essence of her surroundings with swift skill, using watercolors or photographs. However, those quick initial studies make up the first drafts of her vision. After returning to her studio, she feeds these images into Photoshop, adjusting hues and shadows, reshaping rivers or adding clouds to create more intrigue to the landscape. Once Wendy is satisfied with the digital mock-up, she prints it off and meticulously recreates the scene in acrylic paint — easily spending 40 or more hours on a single work until she feels the subject captures an ineffable beauty that seems to sing off the canvas.

Wendy’s art straddles the line between realism and impressionism, capturing the spirit of a place rather than just its representation. “For landscapes, I am trying to capture the feeling of a place,” she explains. This creative storytelling might involve saturating colors, intensifying shadows, or even ‘moving mountains,’ as she humorously puts it. Her goal isn’t strict fidelity to reality but recreating the magic and personality she sees outdoors — a skill honed by countless miles exploring remote peaks, canyons,



and valleys. Whether painting a beloved pet and capturing the honor and loyalty in its eyes or filling a large canvas with the grandeur of Smith Rock glowing under an early-morning sun, Wendy’s work is suffused with awe and emotion.

Wendy’s grew up in the rural logging community of Wallowa County, nestled in the remote northeast corner of Oregon. Her upbringing was infused with creativity, thanks to a father who was an accomplished architect, and a mother who enjoyed crafts like Tole painting, and a high school art teacher who encouraged and challenged her. Wendy’s dual loves of art and athleticism surfaced early — running long distances became a beloved routine when she was a child, and by her teens, she was already mastering detailed sign painting for billboards and creative detailing for trucks, a lucrative enterprise for the young artist.

In college and while earning a master’s degree, Wendy combined her talent in illustration with computer technology, eventually working as a brand strategy consultant. Wendy is a dedicated member of the Dry Canyon Art Association (DCAA), volunteering extensively, helping to organize art shows and encouraging others to engage with the arts. Beyond DCAA, she also served as president of the General Federation of Women’s Clubs’ Oregon chapter from 2022–2024, working to foster creativity and service within her region.

When asked what advice she’d give to others, Wendy offers this: “Never stop learning and growing. Don’t get caught up in one style just because that’s what sells. Stay curious.”

Meet Wendy Wheeler-Jacobs at a reception in her honor at Cascade Hasson Sotheby’s International Realtors in Downtown Redmond during February’s First Friday Art Walk, February 7 between 4–7pm. Wendy’s art will be installed at Sotheby’s for the month of February. Hors d’oeuvres and beverages will be served.

Explore more of Wendy’s world at [thepaintgeek.com](http://thepaintgeek.com) or follow her on Instagram and Facebook.

[drycanyonarts.org](http://drycanyonarts.org)

# Frank S. Matsura: Portraits from the Borderland

In 1903, having immigrated from Japan, Frank Sakae Matsura (1873-1913) arrived in newly incorporated Okanogan County along the U.S.-Canadian border in Washington state. Matsura had been formally trained in photography and established a studio in the small town of Okanogan, a cultural and geographic “borderland” where he, as an outsider, witnessed a time of change in the region.

In his studio, Matsura created detailed portraits of the Indigenous people of the region. More than a century later, his work is now receiving attention as some of the most visually potent and nuanced images of Indigenous peoples from the era — conceptually sophisticated and collaborative portraits of individuals and families with whom he maintained trusting relationships. The detailed images share their lived experiences and converging customs during a time of transition.

Matsura’s work will be shared in a new exhibition now open at the High Desert Museum. *Frank S. Matsura: Portraits from the Borderland* will feature 39 photographs recovered from Matsura’s archive paired with period-specific cultural items from the Indigenous Plateau, a High Desert region that encompasses the Columbia River and its tributaries. Exploring Indigenous representation through detailed photography as well as objects, the exhibition spotlights some of Matsura’s most culturally significant work against a backdrop of regional transformation in the early 20th century.

The exhibition originated at the Northwest Museum of Arts and Culture in Spokane, Washington. Matsura’s photographs are blown up to better share their impressive detail. They capture moments that reveal Syilx (Okanogan) communities adapting to a changing time. The exhibition includes cultural objects, such as gloves, beaded cornhusk bags and leggings, drawn from the Northwest Museum of Arts and Culture’s collection and from the collections of the High Desert Museum. They will be next to Matsura’s photographs to bring to life attire featured in Matsura’s photographs.

“By sharing Frank Matsura’s compelling photographs alongside objects and contemporary videography, this exhibition offers a rich exploration of Indigenous communities and stories in the Plateau region,” said Executive Director Dana Whitelaw, Ph.D.

Washington State University Associate Professor Michael Holloman (Colville Confederated Tribes), a curator of the original exhibition, is helping guide the High Desert Museum’s exhibition. He will also soon publish a book about Matsura’s life with PA Press/Chronicle Books. Holloman calls Matsura a fascinating figure who made choices that raise more questions than answers — including why he left Japan, briefly settled in Seattle, where there was a significant-size Japanese immigrant community, and then left again to make a home east of the Cascade mountains in the very rural Okanogan region of the Columbia River Plateau.

Immediately, Matsura became a popular member of the Okanogan community, and ten years later when he died suddenly, his funeral became a community-wide event. During his lifetime, Matsura attracted many people from across the region for portraiture, including individuals and families from upper Indigenous Plateau tribal communities. Among Matsura’s total body of work are visually potent, intimate and collaborative studio portraits telling nuanced stories of regional Indigenous identity.

“Frank clearly was personable and had a sense of humor, and he clearly developed relationships with the people he photographed,” Holloman said. “As a Japanese immigrant he was also new to cultures in North America and in the region where he settled, which perhaps freed him to approach portraiture without enforcing the stereotypes that were common at that time.”

The exhibition has four themes: *The Myth of the Vanishing Indian*, *Beauty and Utility*, *Collapsing Hierarchy* and *Geijutsu Shashin (Photographic Art)*. Each theme considers various ways in which Matsura’s artistic legacy challenges stereotypes, unsettles power dynamics in image-making, and fills important gaps in historical and regional narratives.

Unlike some of his contemporaries, whose work reinforced erroneous beliefs that Indigenous people would soon disappear, Matsura’s portraits share Indigenous people choosing their own identities. Gingham and plaid, work wear and crocheted accessories blend fluidly with “trade blankets,” glass beads and natural ancestral materials. Instead of nostalgia, Matsura’s portraits point to an ongoing and complex cycle of reinvention.

The Plateau cultural belongings and regalia featured in Matsura’s portraiture are at once functional, vibrant and symbolic. Some materials, like buckskin, evoke durability and continuity. Others, like glass beads introduced by the fur trade, represent invention and transition. Floral motifs embellishing many of these items are influenced by European embroidery patterns, translated into regionally specific iconography meaningful to Plateau communities.

Paired with cultural items in the gallery, Holloman said, “these objects bring Matsura’s photographs into living color.”

In addition, a video by filmmaker and storyteller LaRonn Katchia (Warm Springs, Wasco, Paiute) will greet visitors outside the exhibition gallery. Featured will be contemporary stories of three young, vibrant and accomplished women from The Confederated Tribes of Warm Springs: Kahmussa Green, Miss Warm Springs and advocate for missing and murdered Indigenous women; Thyreicia Simtustus, an aspiring pilot breaking barriers in aviation; and Kiahna Allen, a passionate kayaker launching her own nonprofit. They will appear in both contemporary dress and traditional regalia, showcasing the continuum of culture and tradition from the past to the present day.

“These women are not only redefining leadership as Indigenous people today but are also bringing their traditional values with them, embodying the essence of who we are today,” Katchia said.

*Frank S. Matsura: Portraits from the Borderland* is organized by the Northwest Museum of Arts and Culture and was curated by Holloman and Associate Curator of Special Projects Anne-Claire Mitchell. The exhibition will be on view through September 7, 2025.

Generous support for the exhibition is provided by Art Bridges. It’s also made possible by Brooks Resources Corporation, the James F. and Marion L. Miller Foundation, the Old Mill District, the Oregon Cultural Trust, the Visit Bend Cultural Tourism Fund and the Visit Central Oregon Future Fund with support from *Cascade A&E Magazine*, OnPoint Community Credit Union and Travel Oregon.

[highdesertmuseum.org](http://highdesertmuseum.org) • [artbridgesfoundation.org](http://artbridgesfoundation.org)





The Wapato Smithins family posed for Frank S. Matsura's camera sometime between 1903-1913. Matsura approached photography with an openness and connectedness that allowed for some of the most nuanced portraits of Indigenous people from the era. Photo by Frank S. Matsura

FRANK MATSURA PHOTO



*Sue Dougherty*  
OFFLEASH PHOTOGRAPHY

Photography by Sue Dougherty

# Red Chair Gallery Presents Wildlife Photographer Sue Dougherty

by JULIA KENNEDY COCHRAN

Wildlife photographer Sue Dougherty has traveled all over the world seeking exotic animals and birds to photograph. Her favorite species, however, may be the smallest of all: hummingbirds. The combination of their speed and agility in flight, combined with their brilliant colors and unique behavior makes these little creatures fascinating. “Hummingbirds seem somehow magic to me,” she says. Her photos of hummingbirds and many other animals are showcased at Red Chair Gallery in February.

“The more I learn about hummers, the more I yearn to see and photograph them,” Dougherty says. They present serious challenges to the photographer

because they are tiny (two to five inches in length), incredibly fast (up to 60 mph when diving and 30 mph flying forward) and acrobatic (they are the only birds that can fly backward). And then there is their spectacular plumage in a kaleidoscope of colors, particularly blues, greens and purples. Hummers only inhabit the Western Hemisphere and mostly reside near the Equator in countries like Ecuador, Costa Rica and Columbia. There are a few species, including Anna’s Hummingbird and the Calliope Hummingbird that migrate up to Oregon in summer.

Dougherty has made several trips to Central America to snap hummers. In many places, hummingbird feeders are set out in areas where it is easy to take

photos. But last year, Dougherty trekked through the mountains of Ecuador to find unusual hummers in the wild. Those birds can live at altitudes as high as 12,000-14,000 feet. As she and her companions, all carrying tripods and cameras, traipsed upward in the thin air, they marveled at the hummers' energy. "We were huffing and puffing and they were just zipping around," Dougherty laughs.

As a retired veterinarian, Dougherty has an affinity for animals. She has combined her professional interest in animals with her love of photography to capture striking images from her wide travels. She's shot walrus and polar bears in the Svalbard archipelago off Norway, big game in Tanzania and other African countries, wolves and buffalo in Yellowstone National Park, blue-footed boobies and giant tortoises in the Galapagos Islands and gorillas in Rwanda. At home, she supports local fauna at Think Wild, a wildlife rescue service, where she is President of the Board of Directors. When I interviewed her for this article, she was taking a break from photographing surgery on an eagle that had been hit by a car. The nonprofit uses her photos to publicize its program to rehabilitate our own wildlife here in Central Oregon.

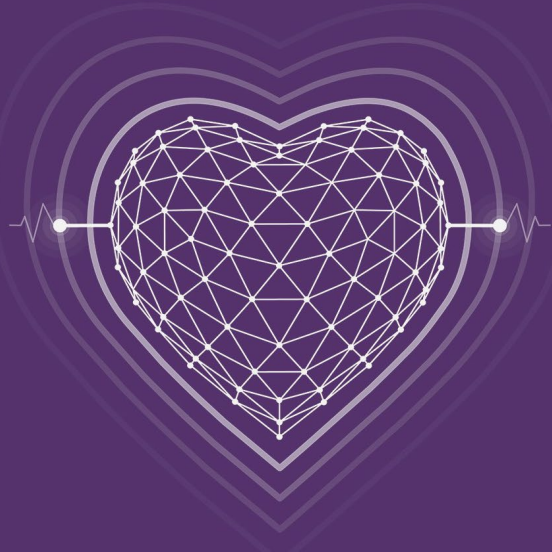
*Offleashphotography.net*  
*redchairgallerybend.com*



*Sue Dougherty*

OFFLEASH PHOTOGRAPHY

88.9FM



K P O V

kpov.org | 541-322-0863

Become a Subscriber to Central Oregon's Magazine Devoted Entirely to the Arts.

OREGON'S ONLY ARTS MAGAZINE SINCE 1995

CASCADE A&E

- \_\_\_\_\_ Cascade A&E \$30 (Out of Area \$40)
- \_\_\_\_\_ Cascade Business News \$40 (Out of Area \$50)
- \_\_\_\_\_ Get both for only \$60 (Out of Area \$75)

NAME: \_\_\_\_\_

ADDRESS: \_\_\_\_\_

CITY: \_\_\_\_\_ PHONE: \_\_\_\_\_

EMAIL: \_\_\_\_\_

CHECK ENCLOSED    PLEASE BILL MY:     VISA     MC

VISA/MC#: \_\_\_\_\_

EXP. DATE: \_\_\_\_\_ CVV #: \_\_\_\_\_

SIGNATURE: \_\_\_\_\_

Send completed form to: Cascade Publications Inc.  
404 NE Norton Ave., Bend, OR 97701 • Ph: 541-388-5665

Artwork by Kelly Theil

SISTERS, OREGON



BIG PONDEROO  
MUSIC + ART FESTIVAL

JUNE 28 & 29, 2025

SHOVELS & ROPE • SIERRA HULL • ALO  
JOHN CRAIGIE WITH THE COFFIS BROTHERS  
TERRANCE SIMIEN & THE ZYDECO EXPERIENCE  
LINDSAY LOU • TOPHOUSE • CAT CYLDE • YARN  
AND MANY MORE!

TICKETS ON SALE AT [BIGPONDEROO.COM](http://BIGPONDEROO.COM)

SUBSCRIBE

A&E

WEEKLY

FREE

The place for art & cultural events in Central Oregon

Join here:

<http://eepurl.com/jTcBX>

[www.CascadeAE.com](http://www.CascadeAE.com)

# Last Chance Valentines



Valentines at the Great Hall. Photo by David Young-Wolff

That special day is sneaking up and ticket sales must close soon, so don't wait for the last minute! Wondering what to do for your Valentine or with a group of friends? Come to the Sunriver Resort Great Hall on Friday, February 14 for a multi-course dinner and quality concert experience all in one. Sunriver Music Festival's Valentine's Day Dinner & Dance Concert, featuring the energetic Blue Skies Big Band, is your opportunity for a memorable night out in the iconic Great Hall. Blue Skies Big Band is a premier swing dance band in the Pacific Northwest, playing many of the original arrangements of classic Swing Era tunes from such band leaders as Benny Goodman, Count Basie, Duke Ellington, and Glenn Miller. Fronting the 17-piece band with tight vocal harmonies are the Jewel Tones with a sound reminiscent of the great trios of the '30s and '40s, from the Boswell Sisters to the Andrews Sisters.

Ticket sales must close early, so reserve your seats now at [sunrivermusic.org](http://sunrivermusic.org).

## Piano Showcase at the Tower

Tickets are also on sale now for Piano Showcase at the Tower on March 29 featuring boogie woogie pianist extraordinaire Arthur Migliazza. Having played on some of the world's greatest stages, including Tchaikovsky Hall in Moscow on the sold-out Kings of Boogie Tour, Birdland Jazz Club in New York City, Benaroya Hall in Seattle, and many more, Migliazza's last fully solo concert in Central Oregon was ten years ago! Arthur has been a performer at several of Sunriver Music Festival's Piano Showcase events featuring multiple pianists, and his solo turn for this 7th annual is greatly anticipated.

Visit [sunrivermusic.org](http://sunrivermusic.org) for tickets to March 29's genre-expansive Piano Showcase at the Tower.



Arthur Migliazza. Photo courtesy of Sunriver Music Festival

# Ponderosa Players Presents *Ride the Cyclone (High School Edition)*



Photo by Rob Kerr

*Ride The Cyclone* is a small, unique musical that amassed somewhat of a cult following among the teen theater population during the COVID-19 pandemic, when several clips from a Washington DC production of the show went viral on TikTok. Ponderosa Players caught wind of this and co-founders Grey Conant *they/them* and Kisky Holwerda *she/her*

were delighted to learn that a high school edition of the production had been released for licensing mid-2023, making the content accessible for their high school performers. “The edits they made to the show are really smart,” says Holwerda, “it’s a truly hilarious show and they preserved the quality of the original script amazingly well.”

# Mountain View High School to Present Roald Dahl's *Matilda the Musical*

Mountain View High School announces its upcoming production of *Matilda the Musical*, a captivating stage adaptation of Roald Dahl's beloved novel. The show will run from February 28 to March 2 and continue from March 7 to 9 in the Mountain View High School Auditorium.

Directed by Amy James, with choreography by Katey James and musical direction by Sarah Irvin, the same team who brought about last year's sell out production of *Beauty and the Beast*, this production brings to life the inspiring and heartwarming tale of Matilda Wormwood, a young girl with an extraordinary mind and a courageous spirit. Featuring a delightful score by Tim Minchin and a witty book by Dennis Kelly, *Matilda the Musical* is a story of resilience, imagination, and standing up for what's right.

Performance Details:

- **Dates:** February 28, and March 1, 2; March 7, 8, and 9
- **Time:** Friday & Saturday at 7pm and Sunday at 2pm
- **Location:** Mountain View High School Auditorium, Bend

• **Tickets:** Tickets can be purchased online at Hometown Ticketing. A limited number of tickets may be available for cash or check at the door.

Audiences of all ages will be enchanted by the high-energy musical numbers, endearing characters, and dazzling performances by Mountain View High School's talented cast and crew. This family-friendly production promises to entertain, inspire, and leave viewers humming its catchy tunes long after the final curtain call.

"Matilda's story is one of empowerment and embracing your uniqueness," says James. "We are excited to share this message with our community and showcase the incredible talent of our high school and middle school students."

Don't miss your chance to witness the magic of *Matilda the Musical* live on stage! Tickets are on sale now and can be purchased here

For more information, please contact Amy James, amy.james@bend.k12.or.us, 541 355-4558.

*Join us in celebrating creativity, community, and the magic of theatre!*

The hilarious show in question is a dark comedy centered around the lives (or deaths) of six high school students who perish in a freak roller coaster accident. Trapped in a sort of "purgatory" between life and death, the students meet a sentient fortune telling machine — The Amazing Karnak — who offers an opportunity for one of the six to return to Earth. Each student proceeds to sing and dance for their lives, telling the story of their experience on Earth and why they deserve a second chance at life.

While Ponderosa Players' previous shows have involved between ten and fifteen performers, *Ride the Cyclone (High School Edition)* has a cast size of only seven, plus two swings that cover a total of five roles. This intimate cast size has served to boost morale, says Conant. "They bonded almost immediately when rehearsals started because they all have such a passion for this show," they rave, "the nine of them have really become like a little family."

The level of talent among these young performers is truly off the charts. Holwerda and Conant say that their talent has been further highlighted by their adaptability to the staging of the show. By presenting *Ride the Cyclone (High School Edition)* in the round, Ponderosa Players allows the performers to interact directly with the audience and immerse them in the action of the show.

The performance is a technical feat, with projections, lights, and music

interwoven throughout the story. It is also Ponderosa Players' first musical with a live band. Holwerda hints that the band acts as an additional member of the cast, saying, "The audience is in for an exciting surprise. I can't wait for them to see the way the band takes part in the action."

This production follows Ponderosa Players' sold-out runs of *The Addams Family: A New Musical Comedy* and *Tuck Everlasting*. Having cemented their position

in Bend's theater scene with a reputation for excellent pre-professional youth theater, Ponderosa Players is excited to continue bringing high-caliber productions to Bend with *Ride the Cyclone (High School Edition)*. And they're not losing any momentum! Students ages 11-18 can currently register to audition for their spring production of *Guys And Dolls*, performing in June of 2025. They have also announced a full menu of summer programming for 2025, including an opportunity to perform at the historic Tower Theatre. Information on their entire

upcoming season can be found on their website.

Don't miss *Ride the Cyclone (High School Edition)*, produced by Ponderosa Players and performing at Open Space Event Studios, February 19-22!

[ponderosaplayers.com](http://ponderosaplayers.com)

**February 19-21 | 7pm**  
**February 22 | 2pm & 7pm**  
**Open Space Event Studios:**  
 220 NE Lafayette Ave, Bend, OR 97703  
**Ticket On Sale:** [ponderosaplayers.com/tickets](http://ponderosaplayers.com/tickets)

# Liza's Lounge is Back & Scarlet Envy Take the Stage...



## Scarlet Envy's: Bad Advice Tour

February 2 (Sunday)

The Travel Daddyz are excited to announce RuPaul's Drag Race Scarlet Envy. The iconic drag superstar and alumna from RuPaul's Drag Race, fresh off her third season on *UK vs the World 2*. In addition to her performing alongside Katy Perry at *EVITA* in West Hollywood to celebrate the release of her *Rain in Hollywood* EP, Scarlet recently published a poetry book with an audio version on Audible.

She is fresh off a two time award winning U.S. 36-city tour. Scarlet continues to build momentum with her 500k+ followers across social media as she hits the road again and gears up for her Broadway World Award Nominated tour of *Bad Advice*, a 90 minute live cabaret, poetry variety show with a Jazz twist on her pop hits.

## Liza's Lounge

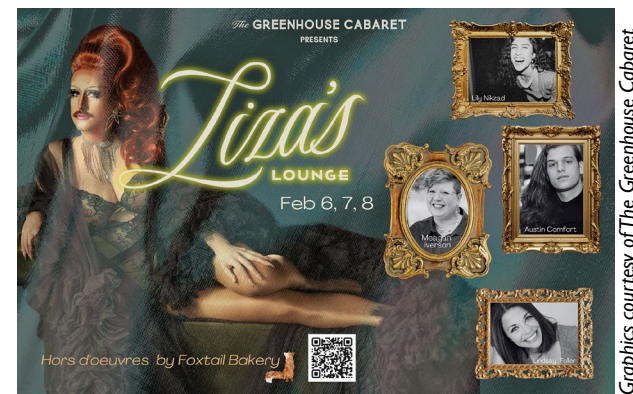
February 6, 7, 8 (Thursday-Saturday)

Step out of your vehicle, heel first, as your sequined dress falls over your leg, stepping into the marquee lights of The Greenhouse. You have arrived at the Cabaret, a night for musical theater lovers and evening treats. You enter and are greeted by the ticket booth, asking for your coat to be checked. You pick up a sparkling Rose wine and find your seat in the candle-lit theater. The stage is simple, with an elegant chandelier and a chaise lounge, accompanied with a piano. Soft music starts, the lights dim, and in the spotlight enters Fertile Liza—an elegant lady of the night and your hostess for the evening. You are swept away for over two hours and you find yourself stepping into the chill air outside, realizing you weren't in New York City.

From the creator of the Cocktail Cabaret in 2015 (John Kish), comes a dusted off and elevated version, Liza's Lounge. Come treat yourself to decadence and live music with some of Bend's best theatrical talent. Your ticket includes entry, coat check, your first drink, amuse bouche/petit fours all evening from Foxtail Bakery, and two hours of raw local talent. The theme of our second rendition of this show is Love, perfect for Valentine's Holiday. The players include the tantalizing Fertile Liza, your hostess for the evening, Lily Nikzad, Lindsay Fuller, and Austin Comfort. Piano will be the incomparable Meagan Iverson again. Show starts at 7:30pm with doors at 7pm. Please try to arrive before 7:30pm so you have time to get comfortable, get your treats, and find your seat.

Dress code is "Creative Black Tie", meaning dress like a black tie gala, but more artistic. Think NYC 54 below elegance. (Two top seating only, shared plates.)

[TheGreenhouseCabaret.com](http://TheGreenhouseCabaret.com) • Instagram: [TheGreenhouseCabaret](https://www.instagram.com/TheGreenhouseCabaret) • Info@[TheGreenhouseCabaret.com](mailto:TheGreenhouseCabaret.com) • 541-699-2840 • 1017 NE Second St., Bend



Graphics courtesy of The Greenhouse Cabaret

# Cascades Theatrical Company Presents

## *Grand Horizons*

### by Bess Wohl

It's out with the old and in with the new (sort of). Over a quiet dinner for two, Bill and Nancy serenely decide to divorce after 50 years of marriage. While Nancy feels liberated and Bill seems unfazed, their adult sons Brian and Ben don't exactly take it well. As the "kids" descend on the Grand Horizons

**February 14-March 2**  
**Thursday-Saturday | 7:30pm**  
**Sunday Matinee | 2pm**  
**Students/Seniors \$32 | Adults \$36**

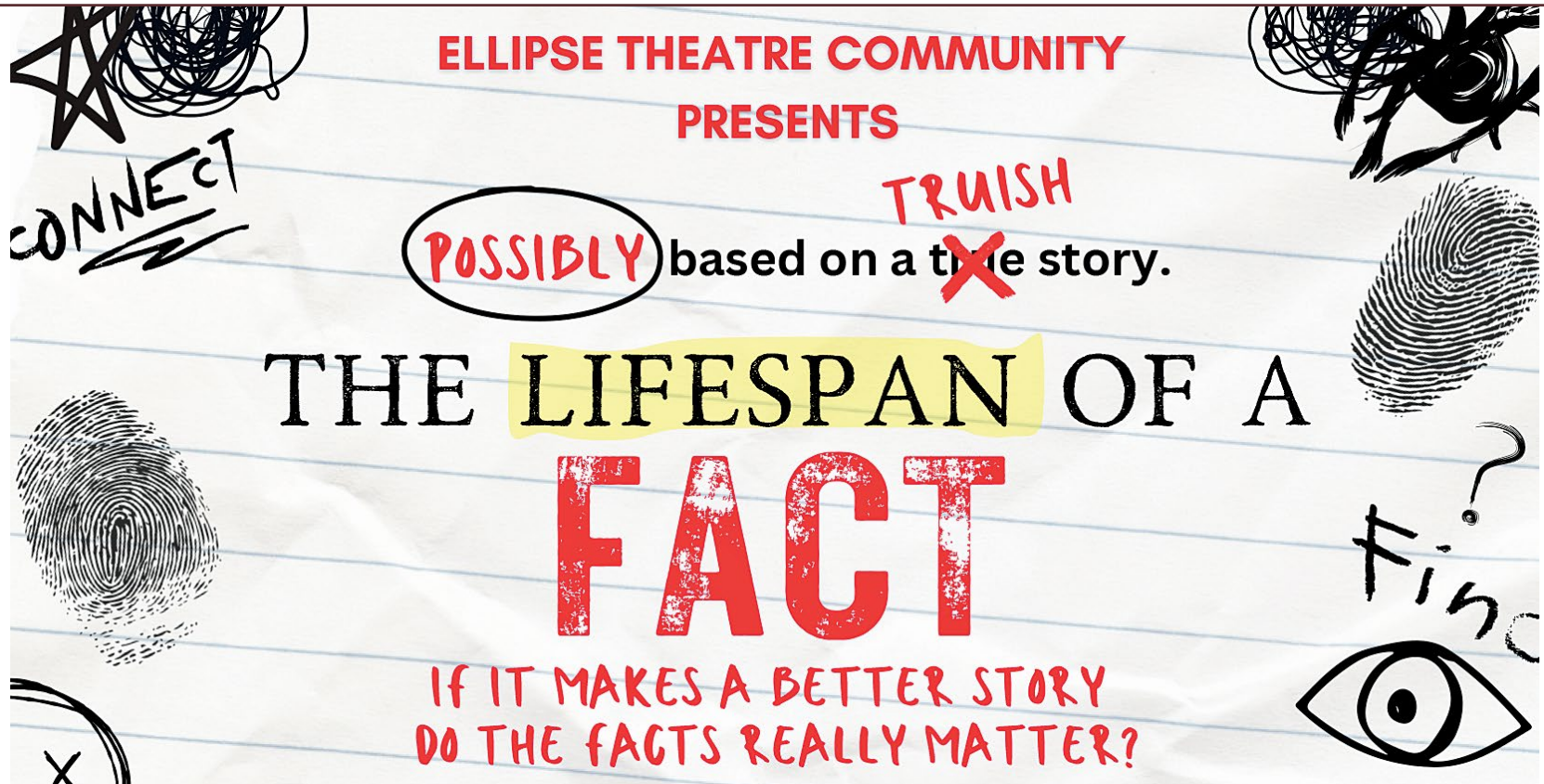
*Additional ticket service fee goes directly back into the preservation and maintenance of Cascades Theatre.*

senior living community to mediate, everything they thought they knew about their parents comes crashing down. Bess Wohl's Tony nominated comedy is a hilarious, heartbreaking commentary on marriage, family, and the wisdom that comes with age — or not.

[cascadestheatrical.org](http://cascadestheatrical.org)



# Ellipse Theatre Community Presents *The Lifespan of a Fact*



What's more important: writing the truth, or telling a good story? Ellipse Theatre Community (ETC) tackles this provocative question in their upcoming production of the critically acclaimed play *The Lifespan of a Fact*, written by Jeremy Kareken, David Murrell, and Gordon Farrell, and directed by Kelly Sutter.

Based on the bestselling nonfiction book by John D'Agata and Jim Fingal, this highly entertaining and sharply funny stage adaptation follows Fingal (Chase Johnston), a young intern at an elite New York magazine. His first assignment from editor Emily Penrose (Judith Faustima) is to fact-check an essay by celebrated but cantankerous author John D'Agata (Eddie Lampe). What Fingal uncovers sends his world spiraling into a debate between "facts" and "truth." With thought-provoking dialogue and zinging one-liners, *The Lifespan of a Fact* promises to be as timely as it is hilarious.

"We are living in an era where the definition of truth seems more fluid than ever," says director Kelly Sutter. "This show strikes at the heart of these complexities, shining a light on the delicate balance between storytelling and accuracy. Our production invites audiences to reflect on their own relationships with the facts they encounter every day. It's a sharp, funny, and deeply relevant piece, and I'm thrilled to bring it to the stage."

As ETC's first production of 2025, *The Lifespan of a Fact* also marks the second offering in the company's ETC NEXT program. This initiative is dedicated to presenting edgy, thought-provoking, and conversation-starting theatre. "As ETC continues to grow, we've been intentional in listening to our audience," says Craig Brauner, ETC President and Founding Member. "While we've had great success with past productions, there's a clear demand for boundary-pushing works. I'm thrilled for our community to experience this exceptional piece."

*The Lifespan of a Fact* runs February 20 through March 1, with performances on Thursdays and Fridays at 7pm, Saturdays at 2pm and 7pm. Tickets are \$28.19 (includes fees) when purchased online and \$25 at the door (available one hour before showtime). All performances will be held at Unity Spiritual Community of Central Oregon (63645 Scenic Drive, Bend), with free on-site parking.

The cast includes Judith Faustima, Chase Johnston, and Eddie Lampe. The creative team includes Director Kelly Sutter, Assistant Director and Stage Manager Wilma Keller, and a production team including Eric Denzler, Warren Schweitzer, Suzie Hughes, Rob Albin, Trevor Graciano, Debbie Levin and Amy Anderton.

[etcbend.org](http://etcbend.org)

# “Know Romance” this February with Deschutes Public Library



It's all hearts and roses as Deschutes Public Library invites you to indulge in “Know Romance” this February. Swoon to the sounds of the Dove String Quartet and learn about 19th century music from the Romantic Era. Deepen your connection to nature with a forest bathing presentation and practice intention setting to build resilience in the new year. Make Valentine's cards and indulge in a charcuterie board class. Families can discover the Children's Museum of Central Oregon and sing along to love songs with Central Oregon's Public (ROCK) Choir. Programs marked with an asterisk (\*) require registration.

## Public Rock Choir\*

Sing songs about romance and love with a live band — a little soft and a little loud. No experience, talent, skill or “good” voices required. Registration required.

- February 3 • 6pm | Immersion Brewing, Bend | Ages 18+
- February 9 • 2pm | High Desert Music Hall, Redmond | All ages

## Valentine's Card Making\*

Share in the love and create eye-catching cards for a friend or loved one. All tools, materials, cardstock, decorative papers, inks and stamps will be supplied; bring a poem or message to include in your card. Registration required.

- February 5 • 1pm | Sunriver Library
- February 9 • 3pm | Downtown Bend Library

## Music of the Romantic Era

Learn about Romantic Era music from the 19th century with a local conductor and professor. This interactive lecture will explore why the term “Romantic” has been consistently applied to this music.

- February 8 • 10am | Downtown Bend Library
- February 8 • 2pm | Sisters Library

# Oregon Poet Laureate Ellen Waterston Announces Release of New Book

## *We Could Die Doing This: Dispatches on Ageing from Oregon's Outback*

In these lyrical short takes ranging from sacred to profane, sassy to compassionate, Waterston addresses everything from green burial to sex after 70. A card-carrying member of the over-the-hill gang, high desert author Ellen Waterston engages the reader in a rollicking conversation about ageing in this collection of three years' worth of her monthly *Source Weekly* columns.

Poet and memoirist Judith Barrington has this to say about *We Could Die Doing This*: "Most of us, whether of that 'certain age' or simply approaching it, need to listen to [Waterston's] thoughts on the joyful possibilities of 'the third act'; [Waterston] believes that 'this phase of life is as rich, complex and dynamic as any before it.'" Caryl and Jay Casbon, authors of *Side by Side*, write, "You can bank on wickedly fresh language, original perspectives, and a rich mix of politics, nature, and dangerous opinions. After reading an essay, you will think about it. You will want to read it again."

*We Could Die Doing This*, published by Source Media, Inc.,

is available at local bookstores, or online at [writingranch.com](http://writingranch.com), [sourceweekly.com](http://sourceweekly.com) or Amazon.

### About Ellen Waterston:

Ellen Waterston is the author of four poetry and five literary nonfiction titles. In 2024 she was named Oregon Poet Laureate and received the Soapstone Bread and Roses Award and Literary Arts' Stewart H. Holbrook Award. She writes a monthly column on ageing and ageism for the *Source Weekly*, a Bend newsweekly, and is the author of *Sharing Common Ground*, an ongoing Oregon Desert Land Trust interview project conducted in southeastern Oregon. In 2015 she founded the Waterston Desert Writing Prize, now a program of the High Desert Museum and, in 2000, launched the Writing Ranch that offers retreats and workshops for established and emerging writers. Waterston serves on the guest faculty of OSU Cascades MFA Low Residency Program. Waterston resides in Bend.

[writingranch.com](http://writingranch.com)

### Self-Love Intention Setting Workshop\*

How do you show yourself love? Reignite your passion for taking care of you by joining Kaija Marshall for a special intention setting and candle-making workshop. Registration required.

- February 9 • 10:30am | Sisters Library
- February 11 • 5:30pm | East Bend Library

### Fall in Love with the Children's Museum of Central Oregon

Come explore and play with the Children's Museum of Central Oregon. Check out some of the museum's most beloved exhibits and get hands-on with STEM activities. This program is intended for children ages 0-11; all children must be accompanied by a caregiver.

- February 12 • 1:30pm | East Bend Library

### A Perfect Pair: Wine & Fondue\*

Sample fondue with a flight of sparkling, still and port wines and enjoy how the taste is transformed with each pairing. Registration required. This event is full.

- February 12 • 5:30pm | Arome, Redmond

### Heart of Forest Bathing

Are you curious about what forest bathing is, where it started and how it is done? Join us to learn about the origins and benefits of forest bathing, the science behind the practice and how to practice on your own.

- February 12 • 6pm | Downtown Bend Library

### Grand Horizons Preview Night

Enjoy a supremely funny comedy about marital malaise. Bess Wohl's play is a hilarious, heartbreaking commentary on marriage, family and the wisdom that comes with age — or not. First come, first served. Doors at 7pm.

- February 13 • 7:30pm | Cascades Theatrical Company, Bend

### Dove String Quartet

Swoon to the Dove String Quartet's program of romantic music. Hear musicians from the Central Oregon Symphony, including Sarah Ruzucka and Meg Clithero on violin, Leslie Knight on viola and Travis Allen on cello.

- February 15 • 2pm | Redmond Library

### Valentine's Charcuterie Workshop\*

Unleash your creativity as we craft delicious and delightful boards, perfect for the Valentine's season. Learn how to combine an array of cheeses, meats, fruits and treats to create a masterpiece that focuses on romantic, heart-shaped and festive elements. Registration required. This program is full.

- February 22 • 11am | Redmond Library

People with disabilities needing accommodations (alternative formats or auxiliary aides) should contact Liz Goodrich at [lizg@deschuteslibrary.org](mailto:lizg@deschuteslibrary.org) or 541-312-1032.

[deschuteslibrary.org](http://deschuteslibrary.org)

## CENTRAL OREGON EXHIBITS

### MADRAS / WARM SPRINGS

#### The Museum at Warm Springs

2189 Highway 26, Warm Springs

541-553-3331 • [museumatwarmsprings.org](http://museumatwarmsprings.org)

The Museum at Warm Springs continues the *31st Annual Warm Springs Tribal Member and Youth Exhibit*. This popular annual exhibit displays the immense talent and artistic excellence of Warm Springs adult and youth Tribal members. The exhibit is curated by Warm Springs Museum Curator and Exhibit Coordinator Angela Anne Smith (Warm Springs, Yakama, Nez Perce and Diné). Selected artworks are available for sale with a 20% commission going toward The Museum.

The exhibit will be on view through February 8.

### PRINEVILLE

#### Rick Steber & Company — MAKERS

131 NE Fifth St. • 541-447-3115 • [rickstebermakers.com](http://rickstebermakers.com)

On display in the retail showroom at Rick Steber — MAKERS is the incredible work of over 160 artists and artisans from Central and Eastern Oregon. Designated as an Oregon Scenic Attraction, this unique collection of one-of-a-kind items has become a destination for many, and an opportunity to introduce your family to the creative culture of the High Desert. Here you will find Native bead work, metal sculptures, leather tooling, saddle making, wood working, silversmithing, original artwork, whittlings, carvings and the complete collection of books by popular author, Rick Steber.

Open Tuesday-Saturday from 10am to 5pm.

## OUTSIDE CENTRAL OREGON

### BURNS

#### Oard's Gallery

42456 Hwy. 20 East, Burns • 541-493-2535 • [oardsgallery.com](http://oardsgallery.com)

Exhibiting many one-of-a-kind items, including original, handmade arts and crafts from nine tribes around the area — baskets, beaded art, clothing, furniture, native art, paintings, rugs, jewelry and more.

## CALENDAR FOR February

THIS MONTH'S PICKS

SEE [CASCADEAE.COM](http://CASCADEAE.COM)  
FOR FULL EVENT CALENDAR

14

#### PAINT YOUR PARTNER

FLYING HORSE GALLERY  
[flyinghorsegallery.com](http://flyinghorsegallery.com)

14

#### FRANK ALMOND

UUFÇO, BEND  
[highdesertchambermusic.com](http://highdesertchambermusic.com)

14

#### VALENTINE'S DAY DINNER & DANCE

SUNRIVER RESORT GREAT HALL  
[sunrivermusic.org](http://sunrivermusic.org)

15

#### GRAND HORIZONS

CASCADES THEATRICAL COMPANY  
[cascadestheatrical.org](http://cascadestheatrical.org)

19

#### RIDE THE CYCLONE

OPEN SPACE EVENT STUDIOS  
[ponderosaplayers.com/tickets](http://ponderosaplayers.com/tickets)

20

#### THE LIFESPAN OF A FACT

UNITY COMMUNITY CENTRAL OREGON  
[etcbend.org](http://etcbend.org)

22

#### FREE FAMILY SATURDAY

HIGH DESERT MUSEUM  
[highdesertmuseum.org](http://highdesertmuseum.org) • [midoregon.com](http://midoregon.com)

22

#### WINTER CONCERT SERIES

CALDERA HIGH SCHOOL  
[cosymphony.com](http://cosymphony.com)

28

#### MATILDA THE MUSICAL

MOUNTAIN VIEW HIGH SCHOOL  
[bend.k12.or.us/mountainview](http://bend.k12.or.us/mountainview)

# Got Chocolate?

SUNRIVER

by DENI PORTER

You know that you love it — light, dark, gooey, crunchy, and more! Mark your social schedule to be at the Artists' Gallery in the Sunriver Village to savor the wonder that is chocolate on Saturday, February 8 4-6pm. Oh, and by the way, the Gallery will also be featuring two of the most talented artists, that you will not want to miss.

Watercolor painter Diane Lay is a Sunriver local who has clearly spent enough time in her own neighborhood to capture the essence of Central Oregon. Inspiration for Lay's paintings originates with her love of nature but the pieces are created with her mastery of the difficult skill set required for transparent watercolor. To raise the difficulty scale, the artist also utilizes a "wet-in-wet" painting technique. She will be at the Gallery (having chocolate), and you can ask her how she does it.

One of Lay's paintings, *Evening Majesty*, depicts a beautiful golden sunset over the Cascade Mountains. It is difficult for non-watercolor painters to appreciate the skill required to make a painting like this look easy! Other paintings such as *The Adventure Begins* demonstrate the artist's ability to completely change the temperature on a piece with the use of color.

Glass enamel artist Cheryl Chapman has an ever-growing imagination for subject matter in her pieces. Not only do your attention, but they also grab your heart.

Chapman worked the last 12 years of her 30-year glass career with high fire glass enamels. Her work requires a reverse process and takes multiple stages of painting and firing. The final image is viewed through the glass on which it was painted. Each piece is an original drawing and unique piece of art and will go through as many as five kiln firings before it is completed.

Chapman's love for animals and nature, with a twist of whimsy, inspires her work. One piece stands on a lighted base is an adorable fox with the sweetest expression on his face. Pieces range in both size and expense from small to larger statement pieces. Come to the party, have some chocolate, and wine, and ask Cheryl how she does it!

*The Artists' Gallery is in Building 19 in the Sunriver Village next door to the Mexican cuisine restaurant.*

*ArtistsGallerySunriver.com  
541-593-4382*

Glass enamel art by Cheryl Chapman



Reaching for the Sky by Dianne Lay

## SUNRIVER EXHIBITS



Treasured View by Dianne Lay

### Artists' Gallery Sunriver Village

57100 Beaver Dr., Bldg. 19

541-593-4382

artistsgallerysunriver.com

The Gallery will be celebrating Second Saturday, February 8, with an artist's demonstration featuring glass enamel artist Cheryl Chapman and watercolorist Dianne Lay from 4-6pm.

Cheryl says: "I am a glass enamel artist and have been working with glass for over 30 years. I have been painting on glass for the last 12 years using high fire glass enamels.



Cheryl Chapman

"My work is done in a reverse process and takes multiple stages of painting and firing. You are viewing the final image through the glass that it was painted on. Each piece is an original drawing and unique piece of art and will go through as many as five kiln firings before it is finished.

"My paintings are a reflection of my love for animals and nature, with a twist of whimsy. I am inspired by the local landscape, dogs and cats, but also venture into bears, foxes, hares and so much more." [sillydogartglass.com](http://sillydogartglass.com)

Dianne Lay states: "*Treasured View* (shown here) is a sample of the technique that I will demonstrate. It uses water and pigment, as I manipulate the paper, to let the mixture flow and the pigments blend. Various tools, with minimal brush work, are then used for marks that enhance and define the resulting image. Very messy, but fun — it is basically a collaboration between me and the watercolors." [dlaystudio.com](http://dlaystudio.com)

The Artists' Gallery is located in Building 19 in the Sunriver Village next door to the Mexican cuisine restaurant.

### Nancy McGrath Green Gallery at Sunriver Christian Fellowship

18139 Cottonwood Rd.

541-593-1183

[sunriverchristianfellowship.org](http://sunriverchristianfellowship.org)

When there are eight artists in the room, there are eight "Points of View." That is the title and theme of the new exhibit at the Nancy McGrath Green Gallery at Sunriver Christian Fellowship. Eight styles and eight perspectives make for an interesting group show.

Participating artists include Danae Bennett-Miller, Dorothy Freudenberg, Anne Gibson, Adell Shetterly, Katherine Taylor, and Shelli Walters. In addition, Sunriver area artists Helen Brown and Janet Frost will show their work in the show.

*Points of View* continues through March 31. Visit Monday-Friday from 2-4pm, and Sundays from 11:30am-1pm.

### Sunriver Resort Lodge - Betty Gray Gallery

17600 Center Dr.

503-780-2828

Artists' Gallery Showcase at the Betty Gray Gallery.

The Betty Gray Gallery of art will be showcasing a variety of local artists, who all show at the Artists' Gallery Sunriver. The show starting in mid-January and running through April will highlight the works, with a mix of paints, pastels, glass, and even wood artists participating. Cascade A&E recently attended the regular Second Saturday reception at the Artists' Gallery to see some of the variety of art that will be on display.

The Artists' Gallery Sunriver has been in the Sunriver Village for almost 15 years. Founded by Midge and Gene Thomas, the gallery is now owned by co-managers Bonnie Junell and Jim Fister. Over 40 artists show in the gallery in some capacity, with over 30 of them regularly working shifts. "By keeping our overhead costs low, the artists can pass on their art at a price that makes it appealing to the buyers," said Fister.

Please feel free to visit the Artists' Gallery in the Sunriver Village, and catch the special display at Betty Gray Gallery at the Sunriver Lodge.

30+  
local artists

# Art is the Music of the Heart




Dianne Lay ~ Watercolors      Cheryl Chapman ~ Glass Art



Artists' Gallery  
Sunriver, Oregon

Second Saturday  
Feb. 8<sup>th</sup> • 4-6pm

Village at Sunriver

Building 19 | 541.593.4382

Open Daily 10am to 5pm

[www.ArtistsGallerySunriver.com](http://www.ArtistsGallerySunriver.com)

# Second SATURDAY

January 2025 ~ Downtown Bend

PHOTOS BY CASCADE A&E MAGAZINE



Jim Fister ~ Perry Drevo ~ Carolyn Weissman and Amy Pfeiffer ~ Jim Fister and Joe Glassford ~ Emily McFadden ~ Barb Gonzalez  
Heidi Brown ~ Laura Jo Sherman ~ Deni Porter and Maggie ~ Marjorie Cossairt ~ Jessica Carleton

## SISTERS EXHIBITS

### Flying Horse Gallery

161 South Elm St.

541-904-0159

flyinghorsegallery.com

Through February 16, Flying Horse Gallery is exhibiting *Game of Thrones: The Cover Story*, the original five linograph prints for the Penguin Books *Game of Thrones* book covers. The extraordinary concepts and linographs were created by the talented local artist Mark Seekins and Tim Green (art director from Faceout Studio book design) who worked directly with George R.R. Martin's team. The exhibit includes a description of the process.



A very limited run of the original linographs signed by George R.R. Martin, as well as several signed by the artists, are available for sale. Mark will also be showing and selling his original print work.

Come join us February 14 from 4:30-6pm at the Flying Horse Gallery for a fun and creative Valentine's Day event, Paint Your Partner! Grab your date (friend or more-than-friend) and give them the gift of your unbridled talent as you sit across from each other. This event is for ALL levels, so don't be intimidated. It's meant to be a silly, good time for all and fun "date." It is sure to be an heirloom that will bring you lots of smiles. Acrylic paints, canvas, brushes, easels and non-alcoholic drinks are provided. Cost: \$50, reservations at FHGpaintyourpartner.eventbrite.com.

### Hood Avenue Art

357 W Hood Ave.

hoodavenueart.com • info@hoodavenueart.com • 541-719-1800

Hood Avenue Art is a premier, destination fine art gallery in Sisters. Over 20 Central Oregon artists exhibit in this artists-owned gallery established in May 2014. The gallery hosts a lively party during regular

4th Friday Art Stroll Sisters in the summer months. Winter events will be as weather dictates.

Exhibiting original paintings and one of a kind prints, sculpture, jewelry, functional and decorative pottery, metal work, woodcraft, textiles, water features, and more, Hood Avenue Art is a beautiful and creative space for art collectors. See art reflective of the landscape, and expressive of the images, thoughts, and sensations of the artists who interpret our unique High Desert culture.

Enjoy innovative artwork in a friendly and intimate setting, while visiting with the working artists who staff the gallery. Our artists offer many personalized services like commissions, customized fabrication, and classes.

### Raven Makes Gallery

182 E Hood Ave.

541-719-1182 • ravenmakesgallery.com

Our gallery offers first market Native American and Indigenous artists' works, spanning the Arctic to Northern Mexico. Contemporary, meaningful and diverse mediums include ledger style art on original, antique maps and fine Pueblo pottery. We showcase an excellent selection of Zuni, Hopi and Navajo jewelry, as well as Navajo weavings. Check the website for hours.

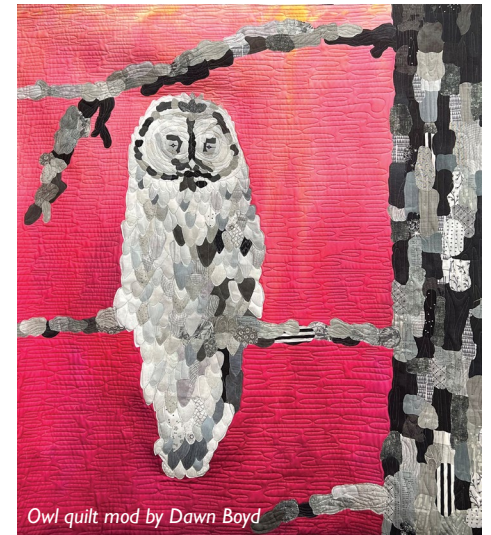
### Stitchin' Post Gallery

311 W Cascade Ave.

541-549-6061

stitchinpost.com

Now showing in Stitchin' Post's Fiber Art Gallery through February 24 — *Reflections in Time*, a quilt retrospective by Jean Wells, celebrating Stitchin' Post's 50th Anniversary year. Our new exhibit opens during the Sisters 4th Friday Art Walk on February 28 from 4-6pm — *Trees*, by the East of the Cascades Quilt Guild. The challenge for this special quilt exhibit was to take the colors black and white, and add one more color (including shades and tints of that color).



Special events will also be featured each month during the Sisters 4th Friday Art Walk to commemorate our 50th Anniversary. For February, we will be debuting Jean Wells' newest fabric line, Earthly Stories batiks.

### Toriizaka Art

222 West Hood Ave.

541-595 8285 • toriizakaart.com

Toriizaka Art features a diverse selection of curated work from accomplished artists, with rotating exhibitions. "Art, like music and good food, nourishes and sustains us. Art that makes you think, stops you in your tracks to admire its vibrance or jumps out and grabs you in some form is worth considering. We look forward to sharing the collection with our visitors," says Karen Thomas.

**Stitchin' Post Gallery**  
EAST OF THE CASCADES QUILTERS  
OPENING FEBRUARY 28, 4-6PM

311 W. CASCADE AVE. SISTERS, OR  
(541) 549-6061 • [stitchinpost.com](http://stitchinpost.com)

*Can You Resist  
This Face?*

**HUMANE SOCIETY  
OF CENTRAL OREGON**  
TO VOLUNTEER OR DONATE  
CALL 541.382.3537 • [HSCO.ORG](http://HSCO.ORG)



painting • digital • printmaking • graphite

# CALL TO ARTISTS

actors • producers • artists • photographers

## FLYING HORSE GALLERY CALL TO ARTISTS

Mid-April Group Show: *Into The Woods* — Open Call

This show is all about showcasing your love for the forest. From woodworking to oil painting, if you have a passion for the magical world hidden in the trees and all things made of wood submit your work. Remember, we aim to keep our gallery focused on whimsy, fantasy and nostalgia. Twisted pine, walnut weavings, a secret creature peaking out from behind a juniper at sunrise in acrylic... surprise us! We accept written ideas of what you plan to create as well as loose sketches. We are potentially open to previously created work but prefer at least one original piece for the show.

For more details and application: [flyinghorsegallery.com/artist-submissions](http://flyinghorsegallery.com/artist-submissions) — closes March 10, 2025.

## SUNRIVER MUSIC FESTIVAL CALL TO ARTISTS

February 21, 2025 is the deadline for submissions for artwork for the 48th season of Sunriver Music Festival. Visit [sunrivermusic.org/festival-art](http://sunrivermusic.org/festival-art) for submission details and benefits.

## APPLICATIONS OPEN FOR 2025 SUNRIVER ART FAIR

The Sunriver Art Fair committee invites artists to submit their applications for the 15th annual Sunriver Art Fair, taking place August 8-10 in The Village at Sunriver.

Applications will be accepted from December 1, 2024 to March 9, 2025.

The art fair is a nationally recognized, juried fine arts and crafts event drawing local Sunriver and Central Oregon visitors as well as visitors from all over the western states.

If you are an artist or know someone who would like to exhibit, now is the time to get your application ready.

Committee members are looking forward to bringing your unique, high-quality art to their enthusiastic buyers and collectors in a vibrant open-air event in the beautiful Village at Sunriver, one of its proud sponsors.

Presented by the Sunriver Women's Club, all net proceeds from this event support its community grant program for nonprofits providing essential services in south Deschutes County.

Applications are accepted online only at [zapplication.org](http://zapplication.org).

## CALL TO ARTISTS — RED CHAIR GALLERY

Red Chair Gallery, an award-winning art gallery located in downtown Bend, is seeking two-dimensional artists, whose work embodies less traditional and more interpretative depictions of subject matter through acrylics, oil, mixed media, cold wax, print making and collage. Applicants must reside in the Central Oregon area. For inquiries, email [redchairgallerybend@gmail.com](mailto:redchairgallerybend@gmail.com). Visit our website, [redchairgallerybend.com](http://redchairgallerybend.com) for more information.

## RCAPP CALL TO ARTISTS

The Redmond Commission for Art in Public Places (RCAPP) is seeking artists interested in showcasing their sculptures in the heart of Redmond as part of the eighth round of Art Around the Clock, a rotating outdoor public art gallery program. Interested artists and artists teams will want to review the Request for Proposals (RFP) available at [redmondoregon.gov/AATC](http://redmondoregon.gov/AATC) and submit their proposal(s) **before 5pm on February 28, 2025**.

“Redmond’s Art Around the Clock started in 2011 and has since become the City’s most successful public arts program, boasting over 33 sculptures on permanent display,” states RCAPP Chair Darlene Veenhuizen. “We are excited to share this current call to artists with the growing and talented arts community here in Central Oregon and beyond. The gallery has featured works ranging from nature-themed to futuristic and sometimes whimsical displays of sculptures in a variety of mediums, all of which contribute to broadening Redmond’s vibrant art culture.”

Art Around the Clock is an outdoor public art gallery where artists loan their sculptures to the City of Redmond for two years. Selected original artworks are installed outdoors on pedestals along pedestrian pathways and traffic boulevards throughout the community. This allows the City to regularly display an amazing variety of public art sculptures for the community to enjoy free of charge. At the end of the two years, a People’s Choice Award vote is conducted, and the winning sculpture is purchased by the City of Redmond to become part of the permanent art collection.

Selected artists receive a one-time stipend. For more information about the RFP, the Art Around the Clock program visit [redmondoregon.gov/RCAPP](http://redmondoregon.gov/RCAPP) or contact RCAPP Liaison Morgan Snyder at 541-504-3062 or via email at [morgan.snyder@redmondoregon.gov](mailto:morgan.snyder@redmondoregon.gov).

painting • photography • printmaking • watercolor

# ART WORKSHOPS

There is a charge of \$20 to list classes and/or workshops or they are free with a paid display ad.

Email [AE@CascadeAE.com](mailto:AE@CascadeAE.com) for more information.

## SAGEBRUSHERS CLASSES

SageBrushers Art Society

[SageBrushersartofbend.com](http://SageBrushersartofbend.com) • 541-617-0900

All classes listed below held at 117 SW Roosevelt Ave, Bend

### *Oil Painting Open Studio Sessions* with Michael Wise

February 4, 11, 18 and 25, 2:30-5pm

These drop-in open studio sessions are designed for artists looking to explore and develop skills with oil paints. Mike will provide technical assistance and creative insight to guide students through the painting process. Participants will receive individual instruction time. Each class will begin with a brief lecture/demo, covering the fundamentals color mixing, paint application, brush technique, and composition.

\$25/class (SageBrushers Members), \$30 (Non-Members). All levels of experience are welcome. For more information contact [mikewiseart@gmail.com](mailto:mikewiseart@gmail.com). \*Please note we are a solvent-free studio, please do not use paint cleaners or painting mediums made from petroleum products.

### *Painting Magic in Acrylic* with David Kinker

February 6, 13, 20 and 27, 9:30am-12pm

Explore dynamic approaches to painting and demystify color and value.

Using the visual elements as scales, like notes in music, create solos, quartettes, symphonies and masterpieces. Discover your voice using a variety of color value and texture strategies. Receive straight forward and distilled instruction where you become the conductor of harmony and play, painting visual music. All skill levels welcome from beginning to advanced. Please bring your own painting supplies.

Cost \$40/class. To register or for more information, contact David Kinker at [dkinker@bendbroadband.com](mailto:dkinker@bendbroadband.com).

### *Painting Musical Scales* with David Kinker

February 15-16, 10am-4pm

Imagine chasing the joy of discovery, delighting in accident and possibility. Creating is the action of healing and “filling the battery” of the soul. Join artist David Kinker to apply the fundamentals of design and color theory with this useful approach. Create visual music outside the limitations of an object or subject. All levels welcome. Some experience with acrylic paint recommended. Cost: \$220. For more information and to register, contact Katherine Weaver at [katherine.weaver40@gmail.com](mailto:katherine.weaver40@gmail.com).

### *Mixed Media Garden* with Shelli Walters

March 15, 10am-4pm

Come paint joyful and expressive mixed media flowers in this garden inspired class with Shelli Walters. Shelli will share her favorite techniques and design tips including creating unique collage elements. Students will explore working with various tools to create compositions in mixed media using acrylic paint, collage, crayon, pencil, etc. Exploring the bold and delicate differences found in nature, Shelli delves into the playful and surprising discoveries of mixing media. Shelli's work is available at [shelliwaltersstudio.com](http://shelliwaltersstudio.com), Tumalo Art Company, Art & Soul Ashland and Marmot Art Space. Cost: \$115. For more information and to register, contact [katherine.weaver40@gmail.com](mailto:katherine.weaver40@gmail.com).

### *Dreamy Landscapes with Translucent Acrylic Layering* with Wayne Jiang

April 26-27, 10am-4:30pm

Turn an ordinary scene into a dreamy landscape. By combining the transparent nature of watercolor, the depth and texture of oil, and the flexibility and fast drying time of acrylics, Wayne's acrylic layering technique demonstrates a very friendly way for watercolorists to transition to acrylics. Using slides, painting demos, painting sessions, and individual assistance, you will create landscapes with depth, subtle luminous colors, and refined details. Intermediate to Advanced experience level recommended. RSVP deadline is April 11.

Cost: \$225 (SageBrushers Members), \$250 (Non-Members).

For more information and to register, contact [barbjc45@yahoo.com](mailto:barbjc45@yahoo.com).

.....

## PINE MEADOW RANCH

[roundhousefoundation.org/events](http://roundhousefoundation.org/events)

[inquiries@roundhousefoundation.org](mailto:inquiries@roundhousefoundation.org)

541-904-0700

Workshop listed below held at

Pine Meadow Ranch, 68467 Three Creek Rd., Sisters

### *Create and Design a Nuno Felted Vest*

March 7-9, 9am-5pm each day.

Back by popular demand, internationally acclaimed felt designer and instructor, Flóra Carlile-Kovács is back at Pine Meadow Ranch Center for Arts and Agriculture to teach this three-day Nuno felted vest workshop. Join

Flóra in designing and creating your very own beautifully fitted, reversible vest from start to finish. Don't miss this opportunity to create and design your very own form-fitted, felted vest. \$450, workshop takes place at Pine Meadow Ranch Center for Arts & Agriculture.



**Red Chair**  
gallery

Fine Art &  
Contemporary Craft

## *Presents Our February Showcase Artists*

**Sue Lyon Manley**

*~ impressionist painting*

**Sue Dougherty**

*~ wildlife photography*

**Blue Spruce Pottery**

*~ pottery*

*Don't forget Valentine's Day, Feb. 14*

*We will be open late that day  
and giving a \$10 gift certificate  
for every \$50 purchase  
on Feb. 14 only.*



SUE DOUGHERTY

*Sue Dougherty*

103 NW Oregon Avenue | Bend, OR 97703  
541.306.3176 | [www.redchairgallerybend.com](http://www.redchairgallerybend.com)

# Handcrafting Comfort and Style for Over 90 Years



Ever since we invented the first recliner in 1927, it's been La-Z-Boy's mission to combine ultimate comfort with stylish designs. That's why we handcraft each piece using only the best materials and meticulous attention to detail. With furniture and decor for every room in the house, La-Z-Boy can create a seamlessly beautiful home.

**LA Z BOY**  
FURNITURE GALLERIES®

*Live life Comfortably.®*

Bend and Medford, Oregon | [La-Z-Boy.com](http://La-Z-Boy.com)